



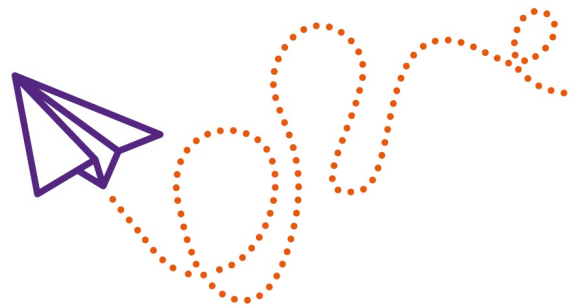
## Parents supporting parents

Home-Start's volunteers work alongside families to give compassionate and confidential support, tailored to each family. Our volunteers are trained and given expert support from the local Home-Start in their community.

To find out more about volunteering for Home-Start visit [www.homestartwrexham.com](http://www.homestartwrexham.com)

## We help families from all backgrounds through their most challenging times

To find out more about Home-Start visit [www.homestartwrexham.com](http://www.homestartwrexham.com) or 01978 366 660



Charity no. 1105325

The Salvation Army, Garden Rd, Rhosddu, WREXHAM, LL11 2NU



## Because childhood can't wait

The earliest years make the biggest impact: Home-Start make sure those years count so that no child's future is limited.







## Working alongside families

Being a parent isn't always easy. It can be lonely, frustrating, and overwhelming.

All parents struggle at one time or another. Many parents need help, friendship, advice and support during those early years.

That is why Home-Start is ready to support families through their toughest times.

Home-Start works with families experiencing challenges including:

- Poor mental or physical health
- Postnatal depression
- Isolation
- Loss and Bereavement
- Financial difficulties
- Tenancy issues
- Family relationship challenges

We can support parents through pregnancy and until their child is 12 years old.

You can ask your Health visitor or GP to refer you or contact us yourself, we are happy to answer any questions you may have.

Our organisers are brilliant at listening to your wishes and ensuring you get the right support for you and your family.

## Local services

We work with families in a range of ways, and use the approach they think will give them the best support. This includes:

- Home-visiting support
- Family groups
- Workshops
- Parenting Programmes

Find us on Facebook: Home-Start Wrexham

@homestartwrexham

"When I would need help and support, she would be there. She could always point me in the right direction with good advice and guidance. She was a good role model for me and I couldn't have asked for better". — previous Home-start Wrexham family.



Contact us today to find out more about how Home-Start works with families

[www.homestartwrexham.com](http://www.homestartwrexham.com)  
01978 366 660